



# 2300 16<sup>TH</sup> STREET NW

WASHINGTON, DC

SOLAR ANALYSIS

April 25, 2018

Perkins Eastman DC

# SOLAR ANALYSIS



**2300 16TH STREET NW**  
WASHINGTON, DC

SOLAR ANALYSIS  
APR 25, 2018

Perkins Eastman **DC**

# AERIAL VIEW\_ SITE AND ADJACENTS PROPERTIES

JUNE 21st



9:00 AM

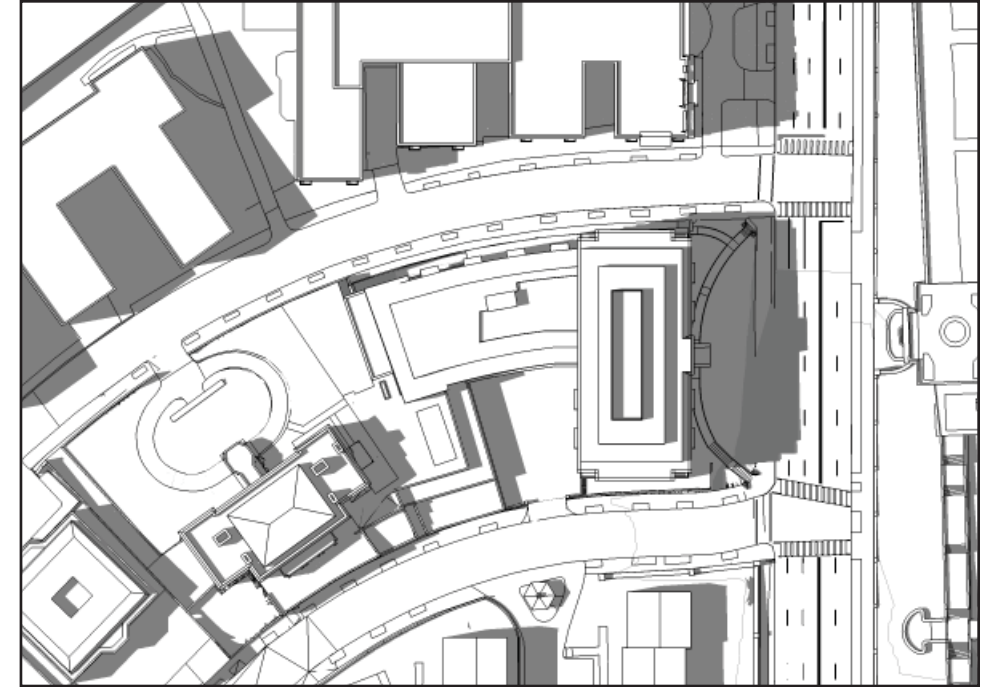
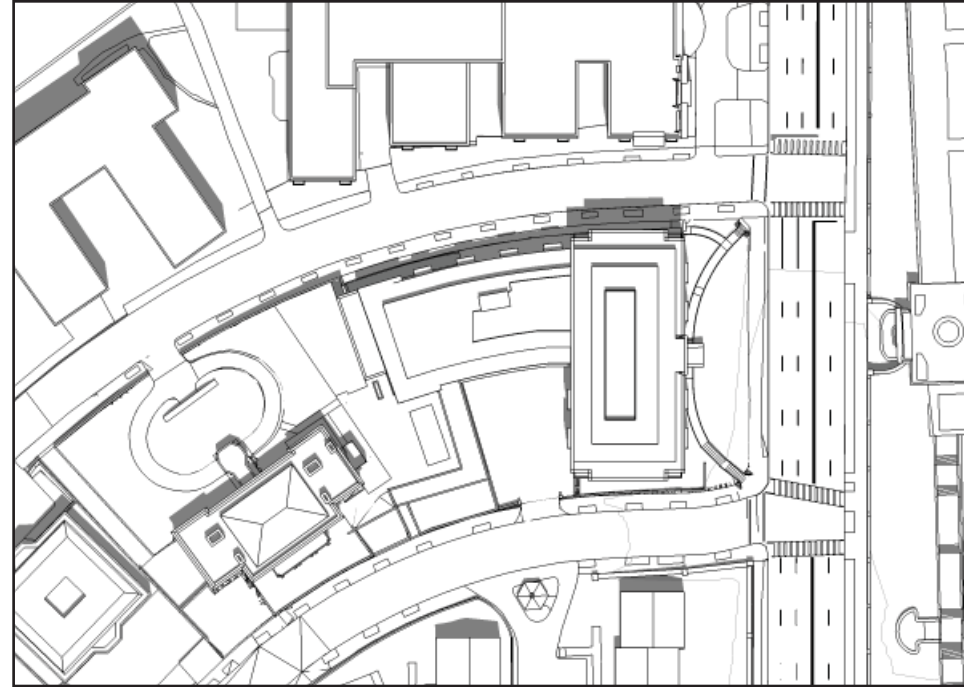
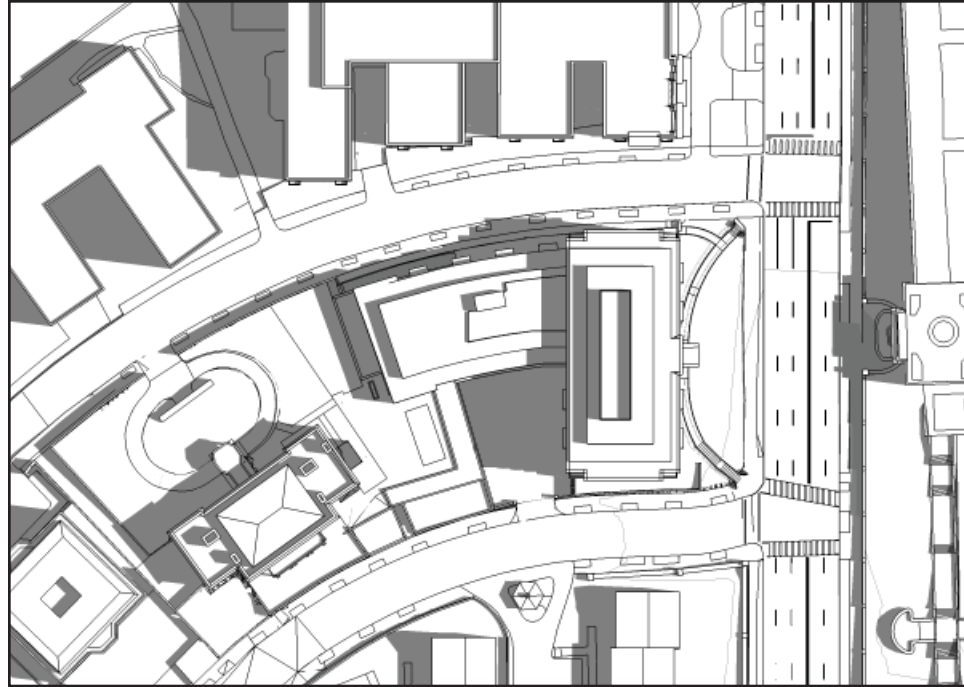


12:00 PM

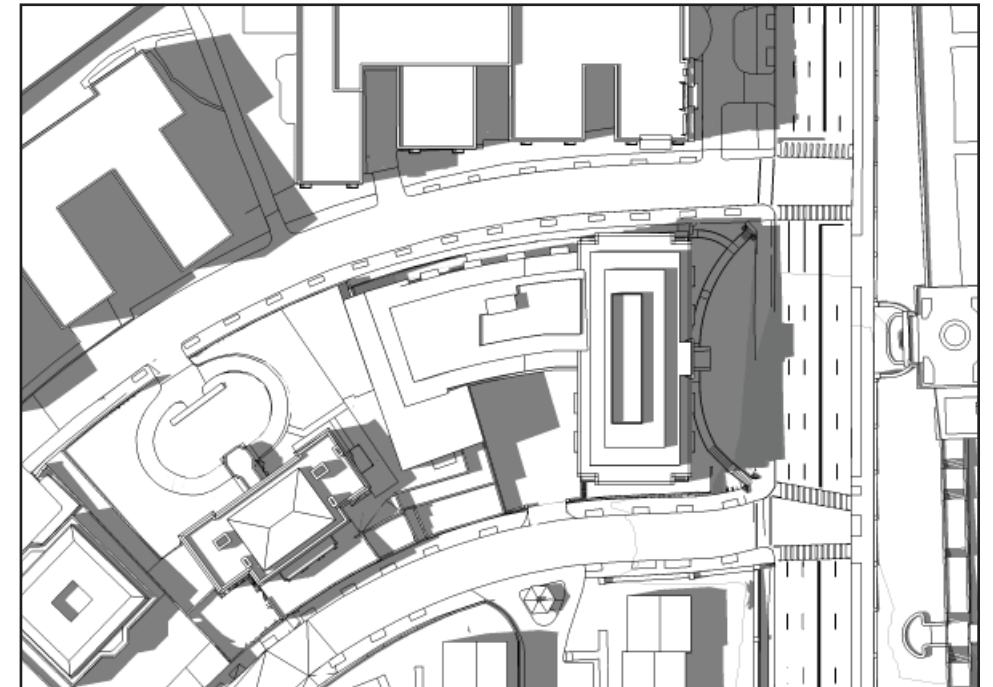
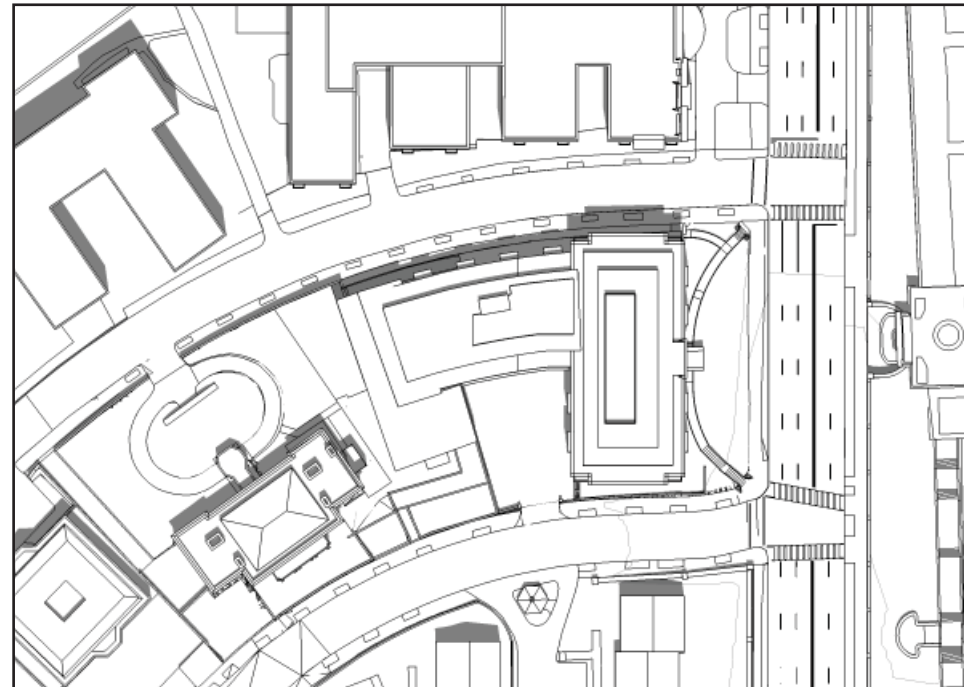
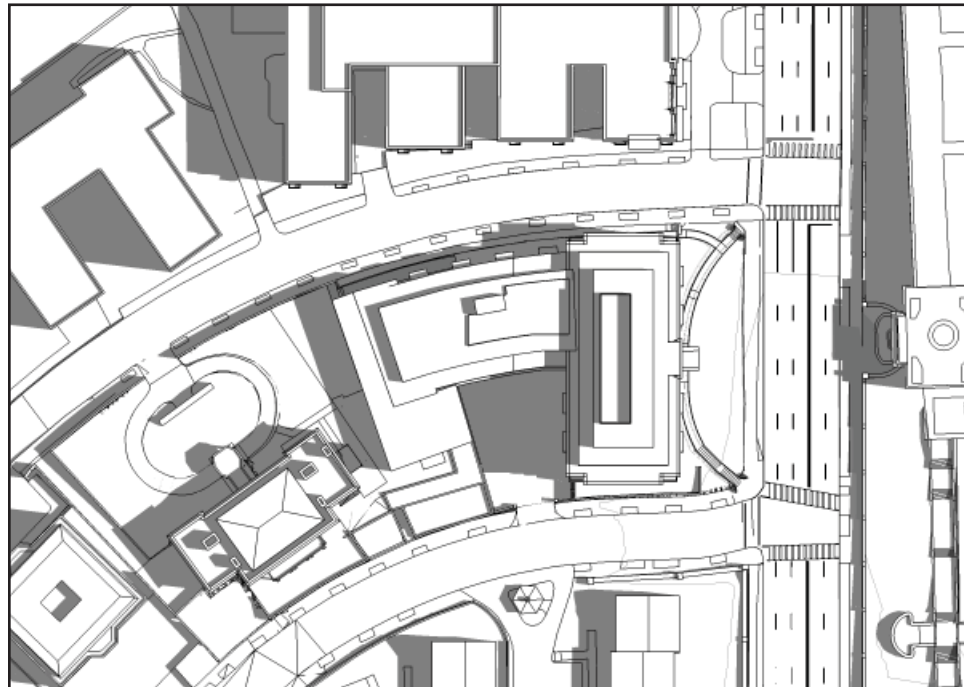


3:00 PM

## MASSING AS APPROVED BY HPRB



## MASSING BY RIGHT



2300 16TH STREET NW  
WASHINGTON, DC

SOLAR ANALYSIS  
APR 25, 2018

Perkins Eastman DC

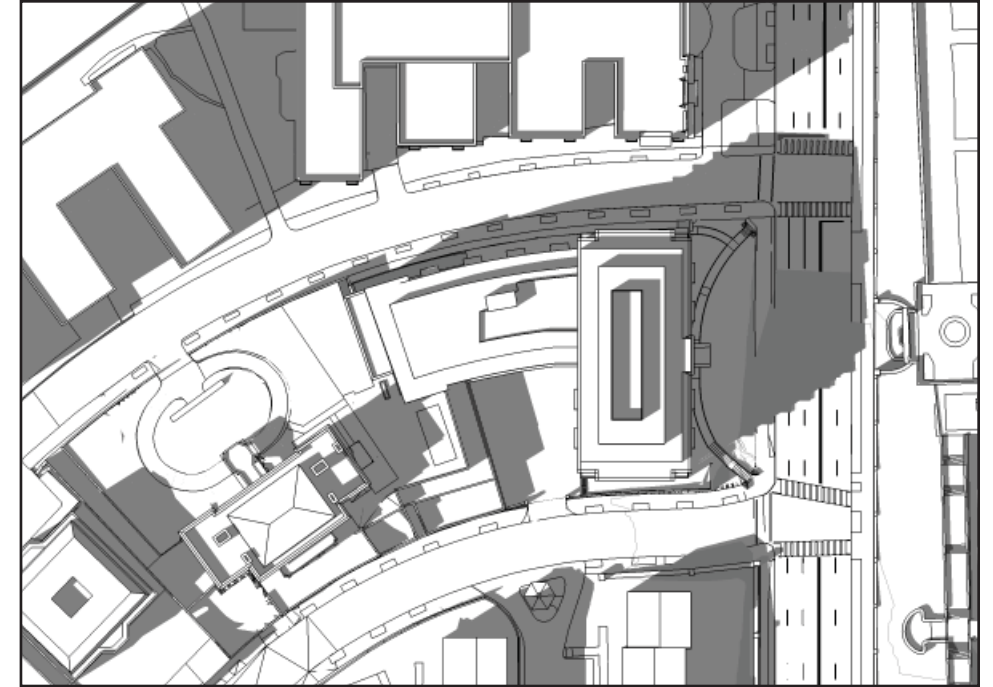
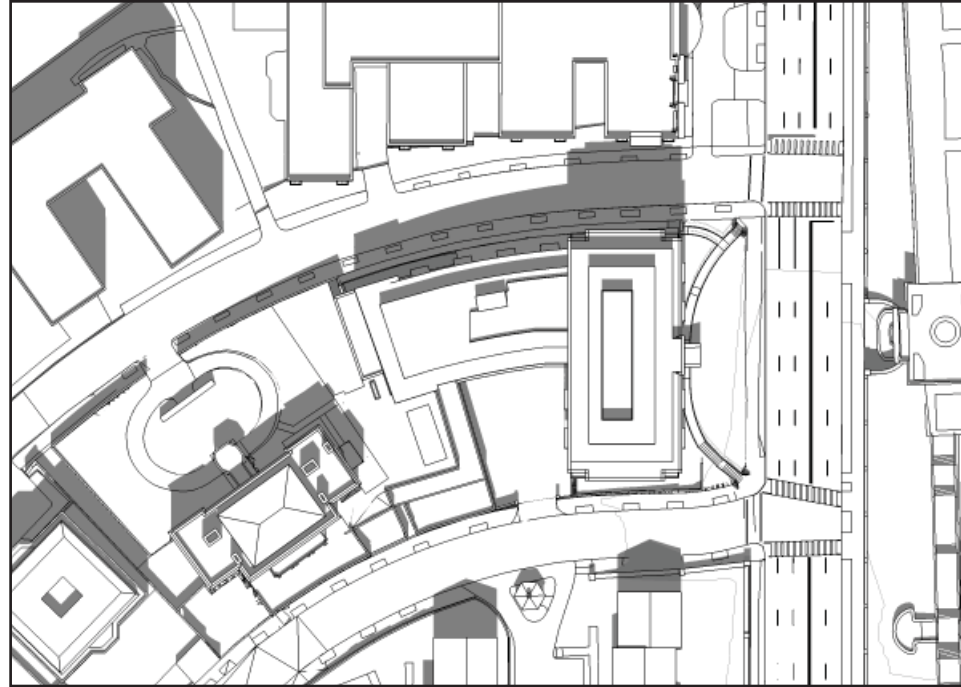
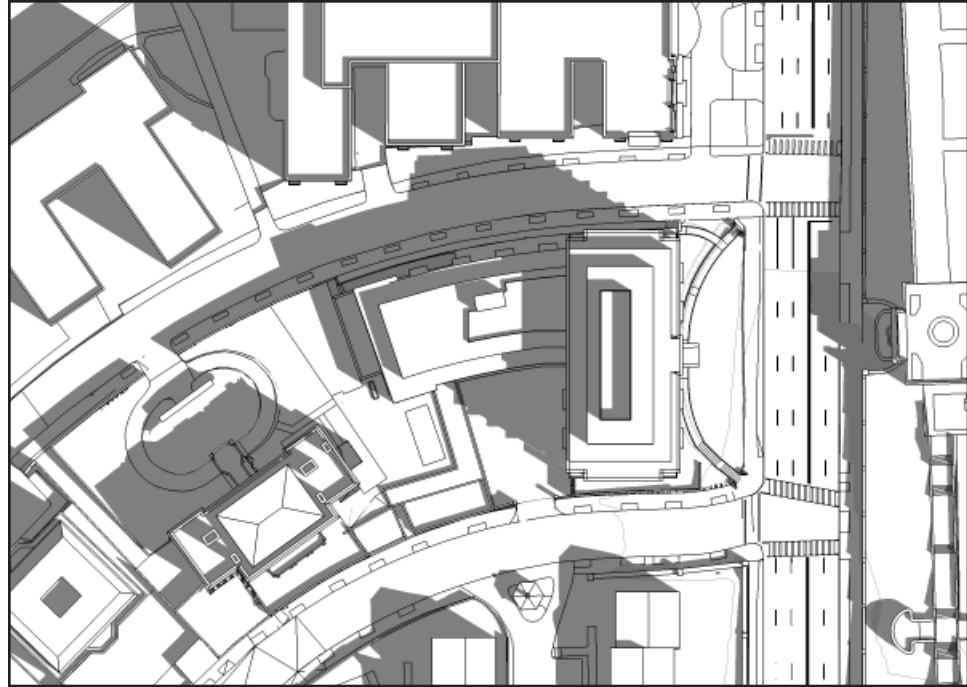
# AERIAL VIEW\_ SITE AND ADJACENTS PROPERTIES

MAR/SEPT 21st  9:00 AM

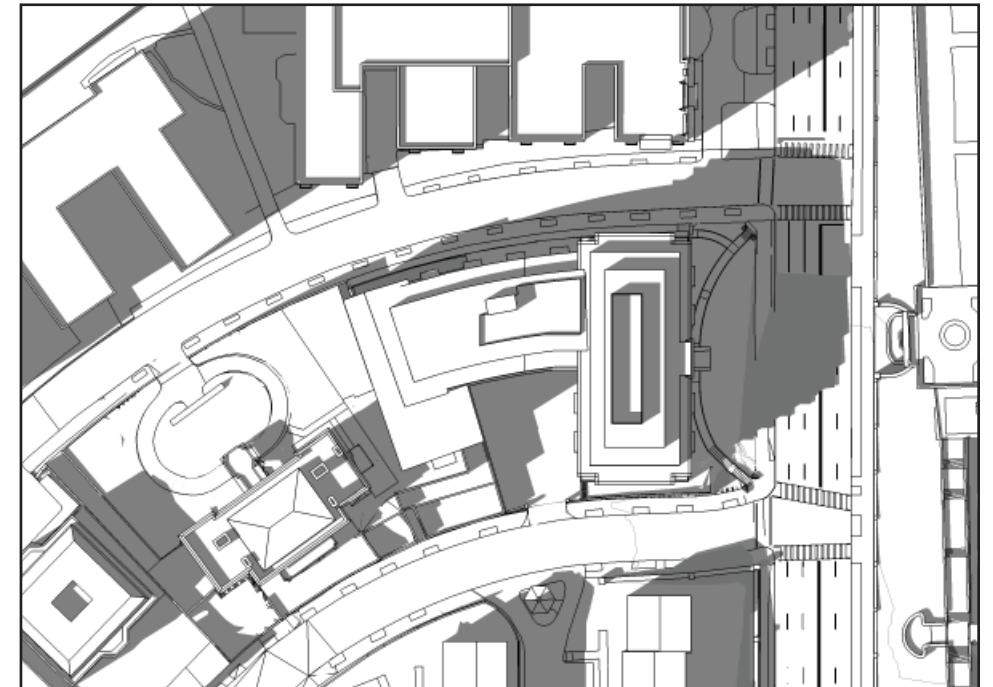
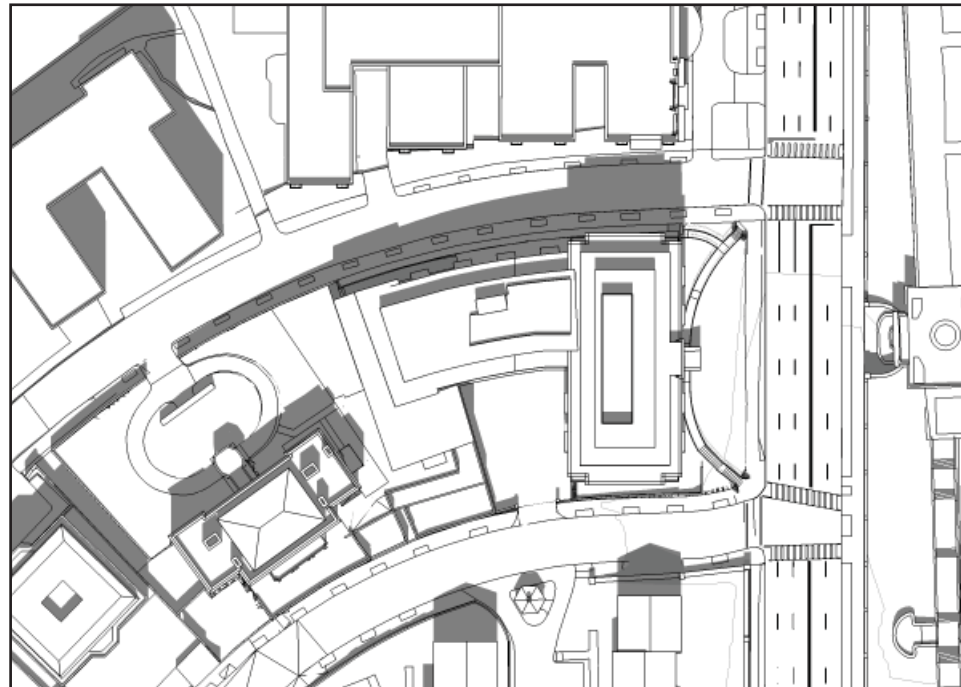
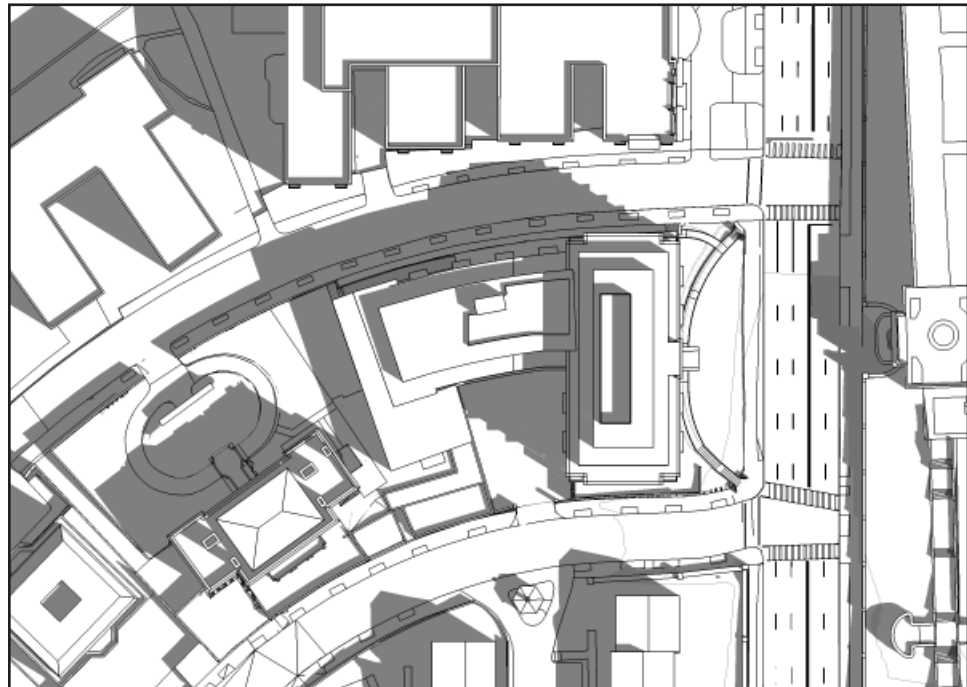
 12:00 PM

 3:00 PM

## MASSING AS APPROVED BY HPRB



## MASSING BY RIGHT



# AERIAL VIEW\_ SITE AND ADJACENTS PROPERTIES

DECEMBER 21st



9:00 AM

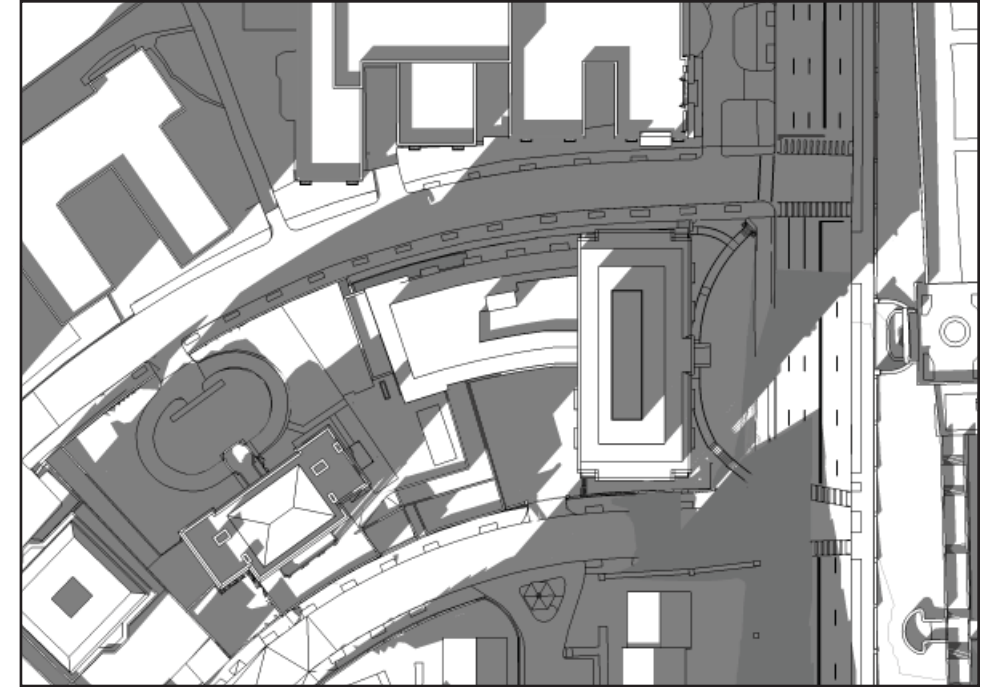
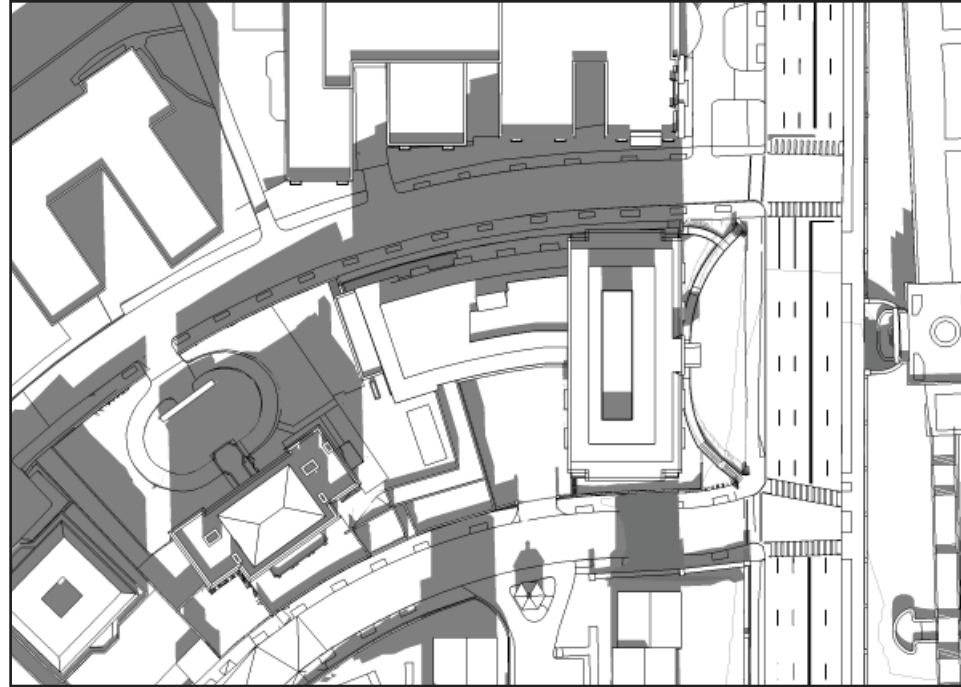
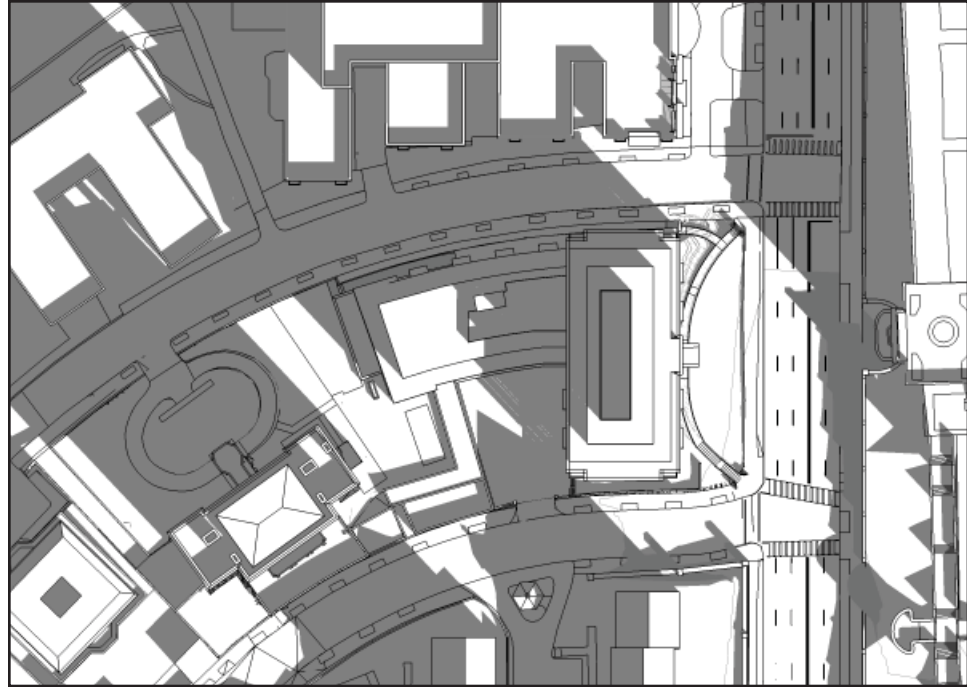


12:00 PM

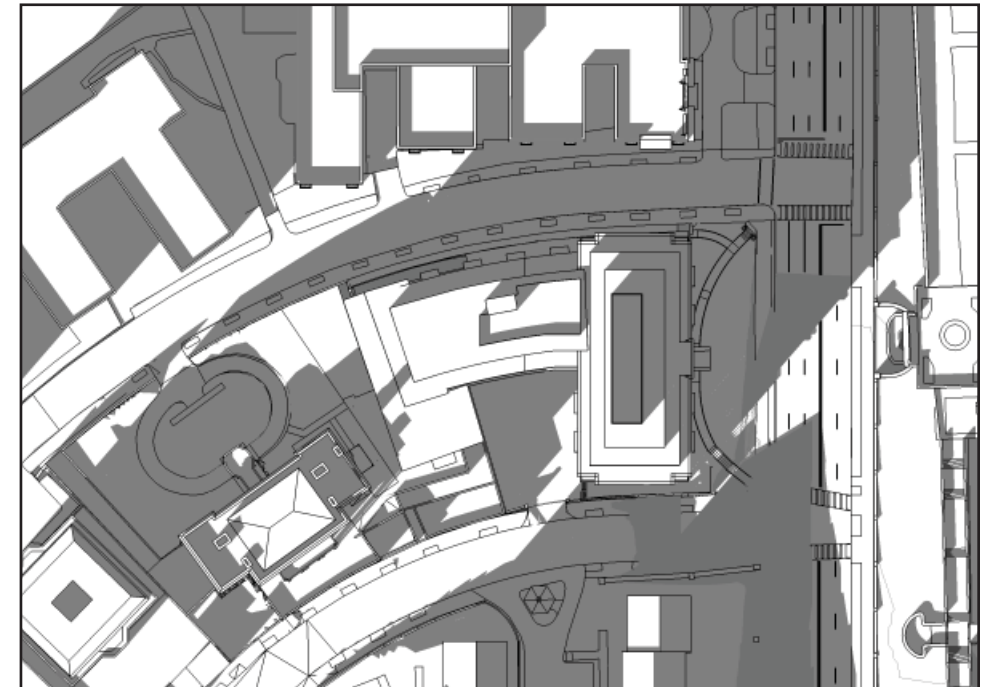
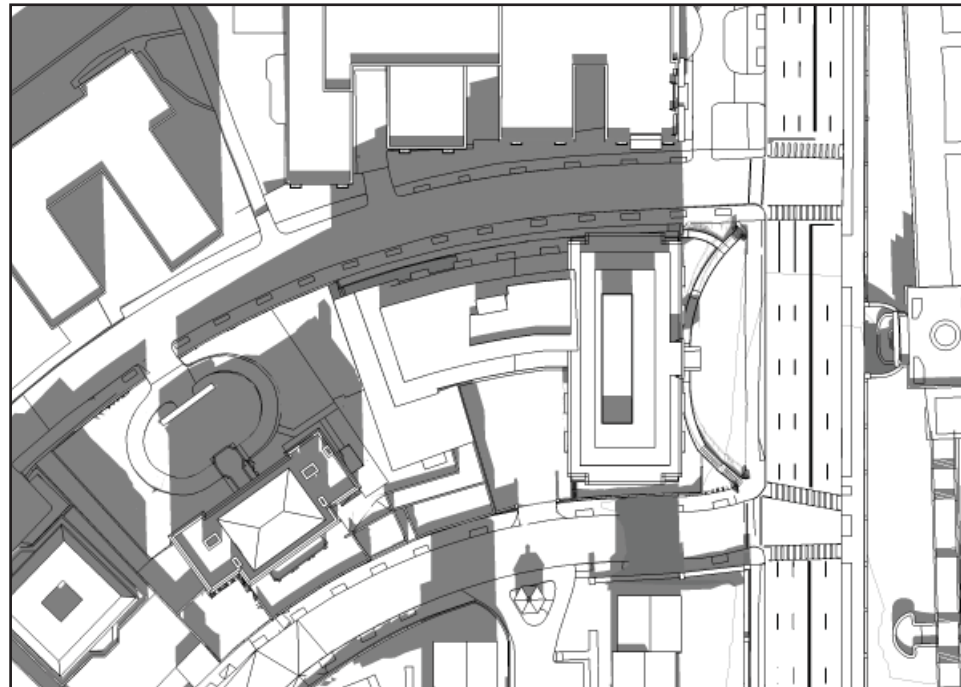
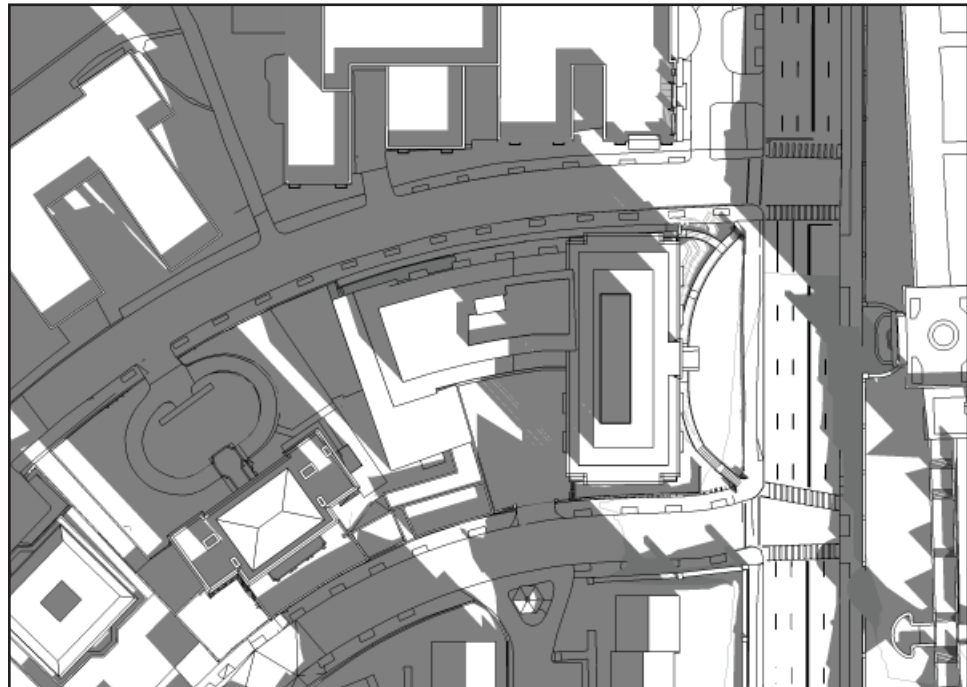


3:00 PM

## MASSING AS APPROVED BY HPRB



## MASSING BY RIGHT



# SE PERSPECTIVE\_ PROJECTED SHADOW ON 1661 CRESCENT PL. AND THE ENVOY

JUNE 21st



8:00 AM

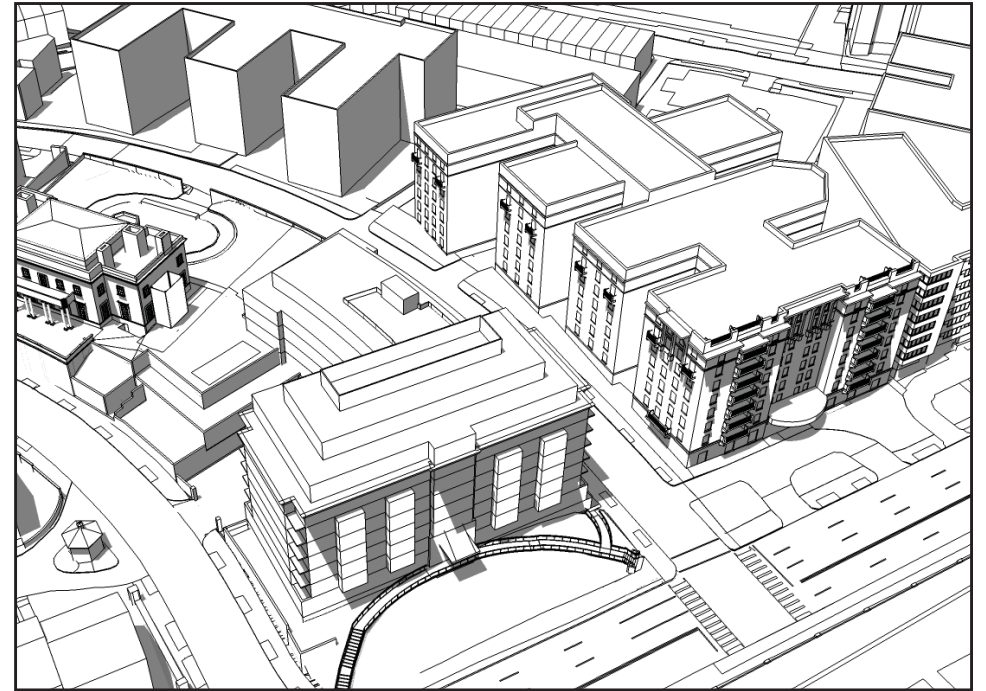
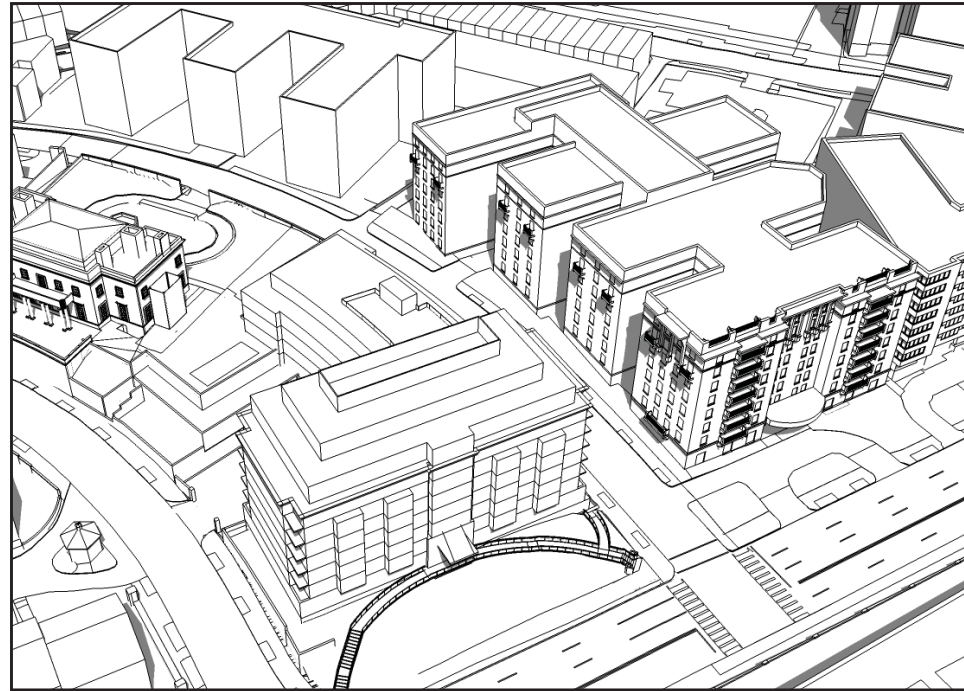
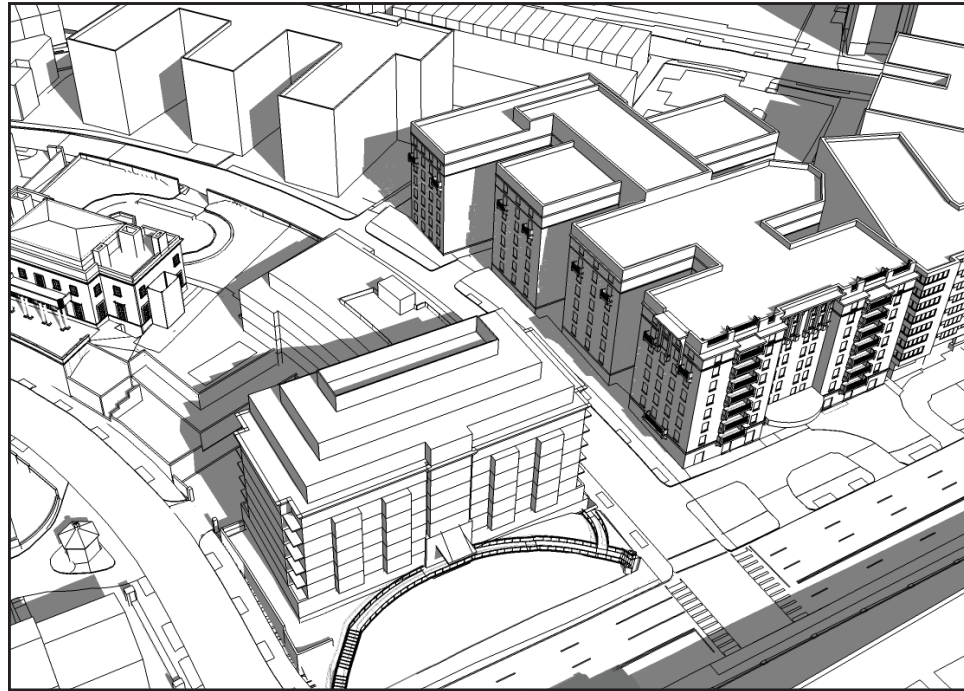


10:00 AM

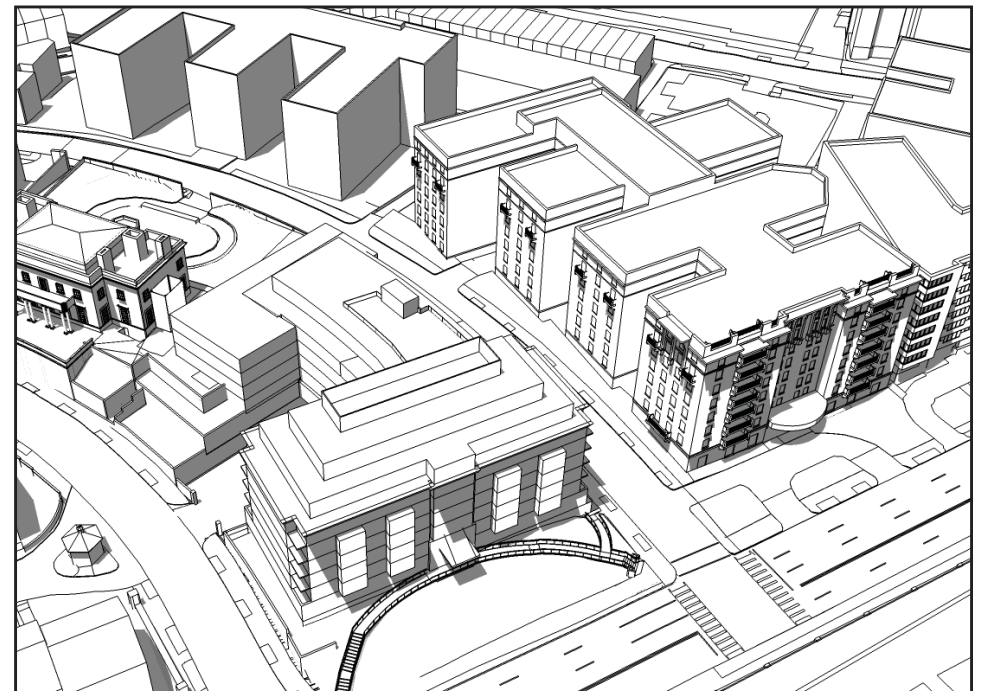
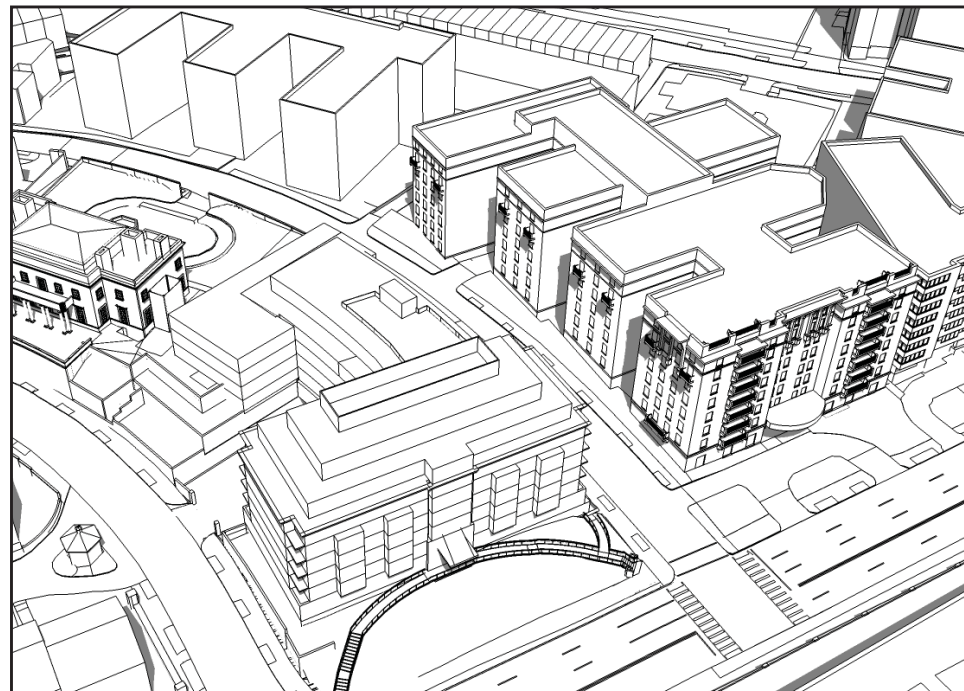
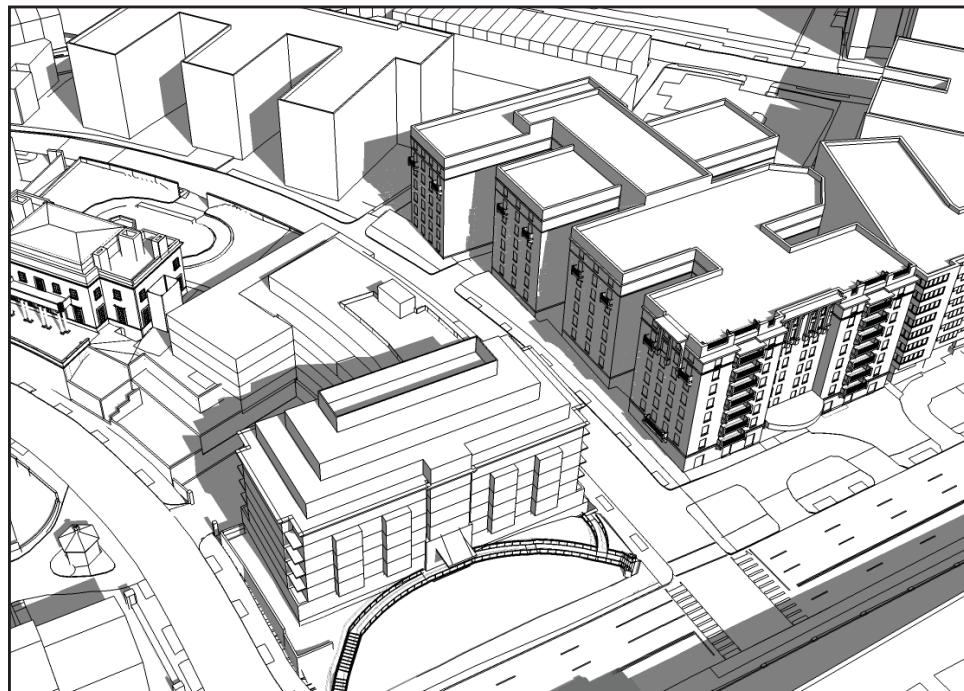


12:00 PM

## MASSING AS APPROVED BY HPRB



## MASSING BY RIGHT



# SE PERSPECTIVE\_ PROJECTED SHADOW ON 1661 CRESCENT PL. AND THE ENVOY

MAR/SEPT 21st



8:00 AM

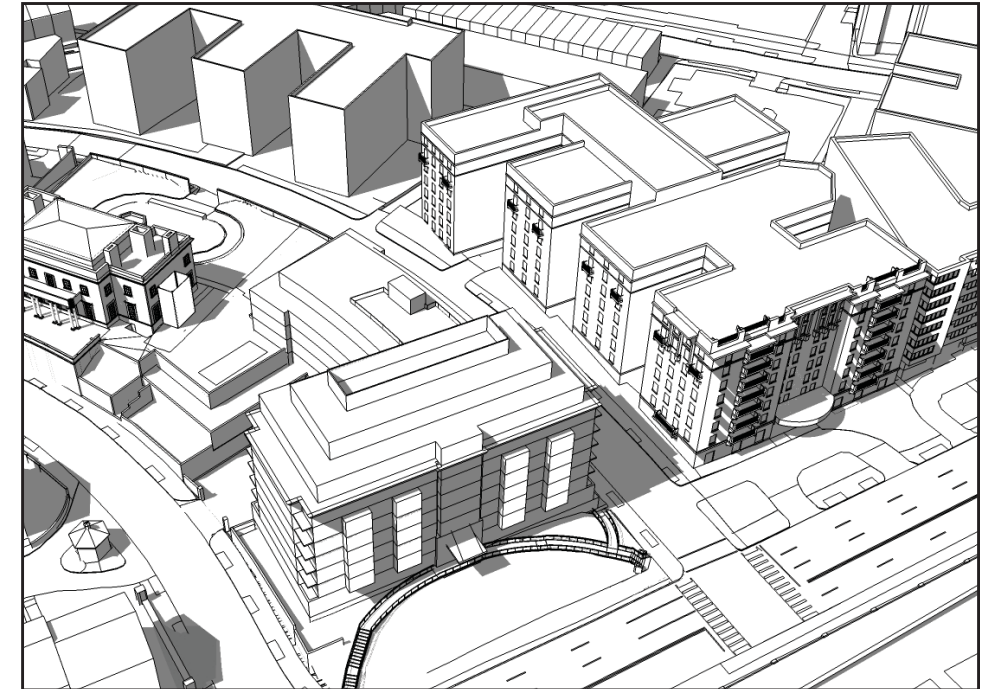
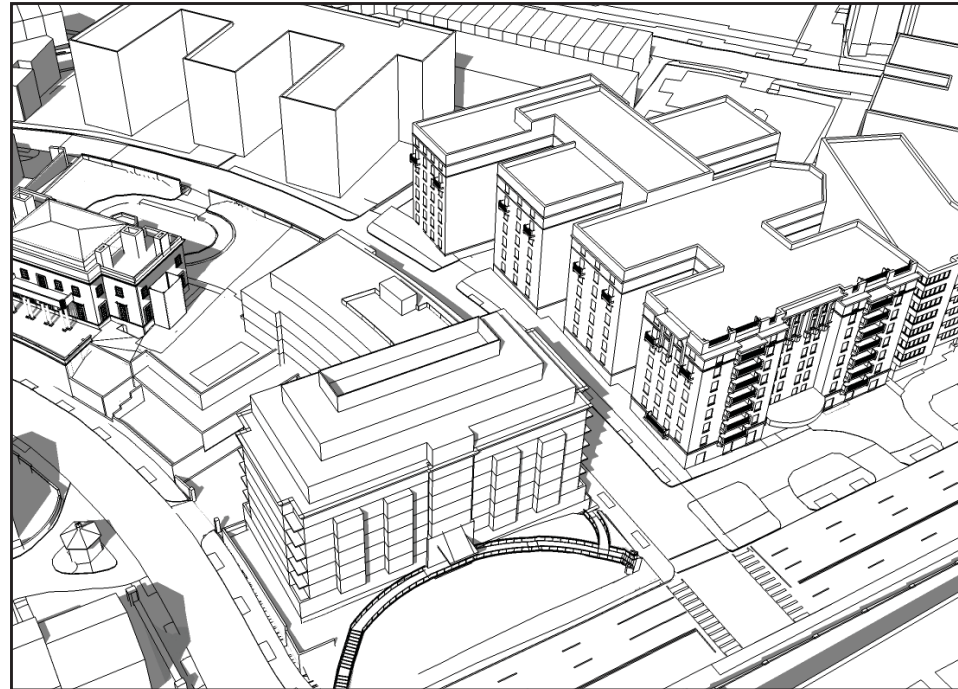
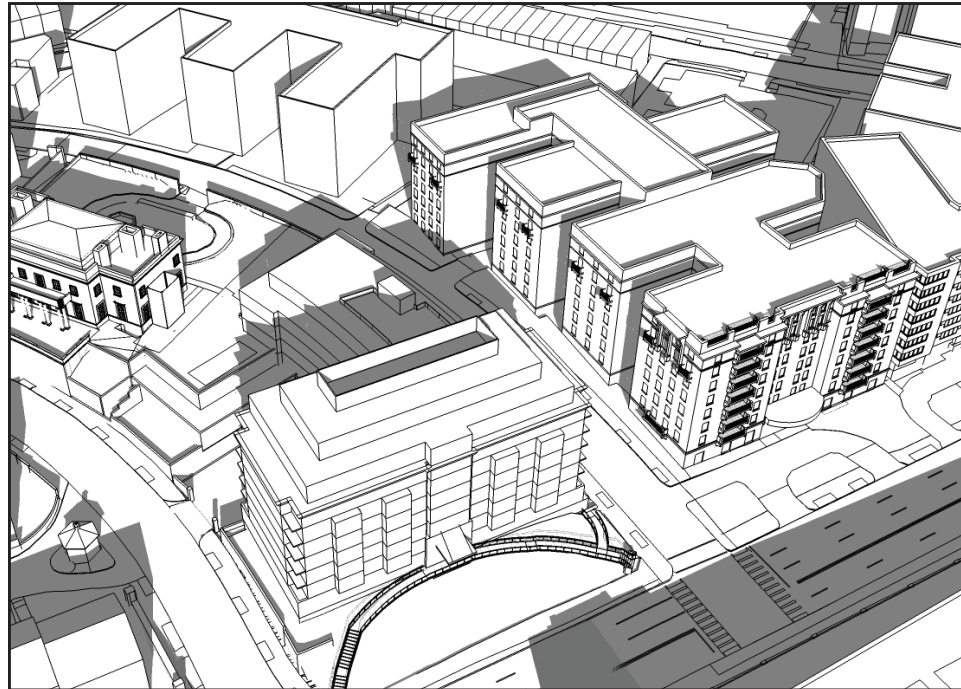


10:00 AM

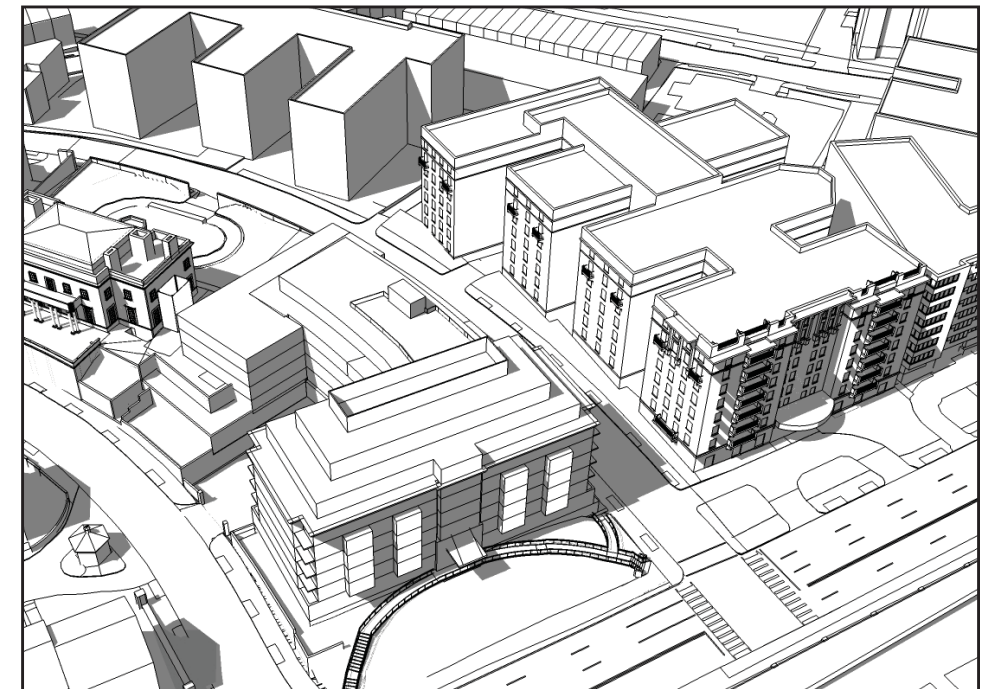
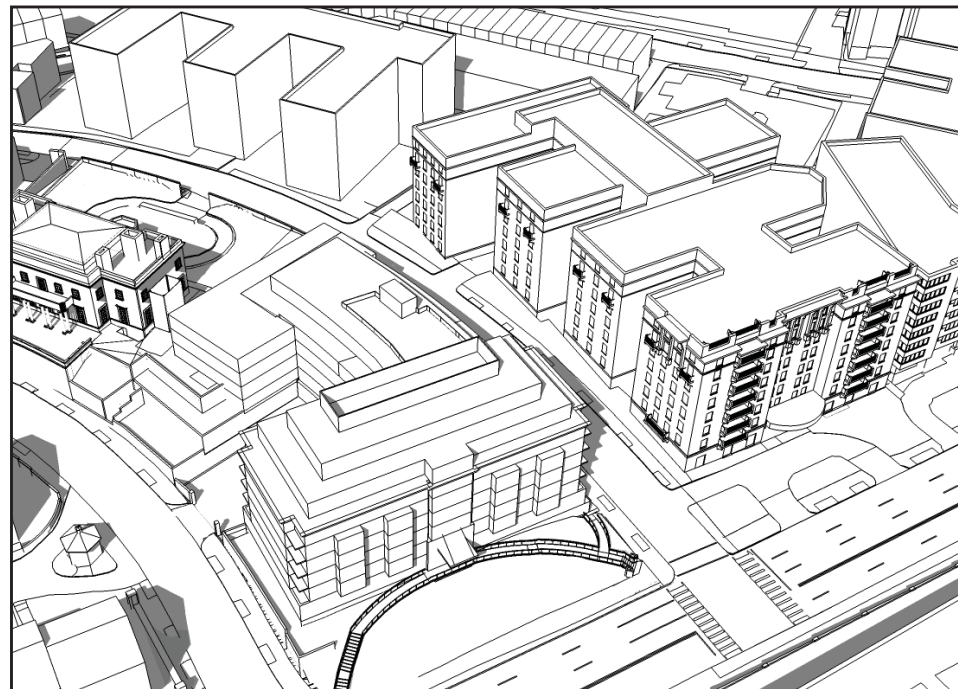
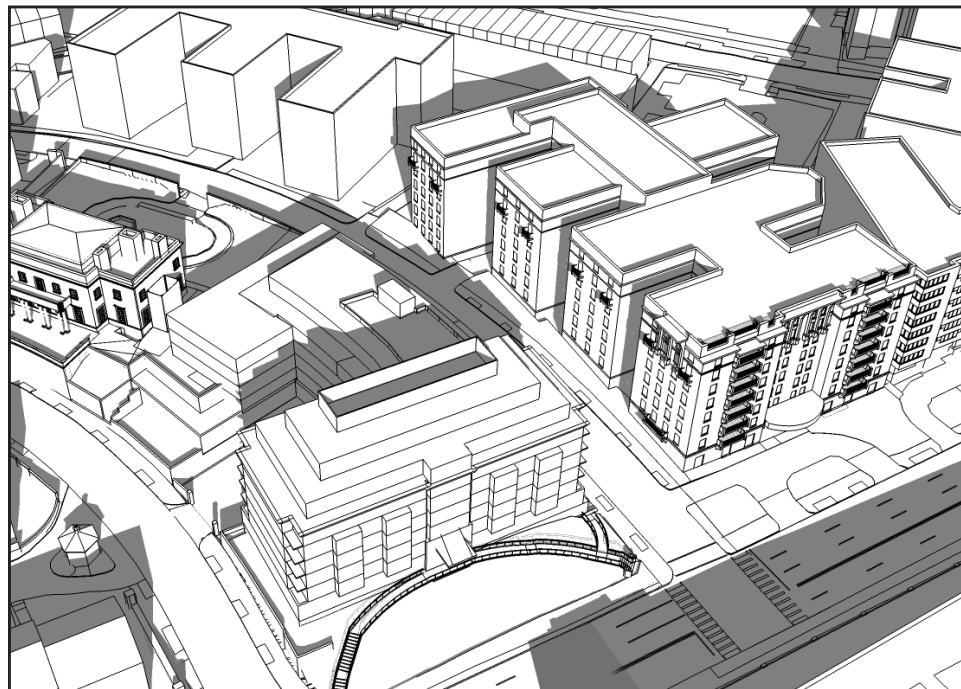


12:00 PM

## MASSING AS APPROVED BY HPRB



## MASSING BY RIGHT



2300 16TH STREET NW  
WASHINGTON, DC

SOLAR ANALYSIS  
APR 25, 2018

Perkins Eastman DC

# SE PERSPECTIVE\_ PROJECTED SHADOW ON 1661 CRESCENT PL. AND THE ENVOY

DECEMBER 21st



8:00 AM

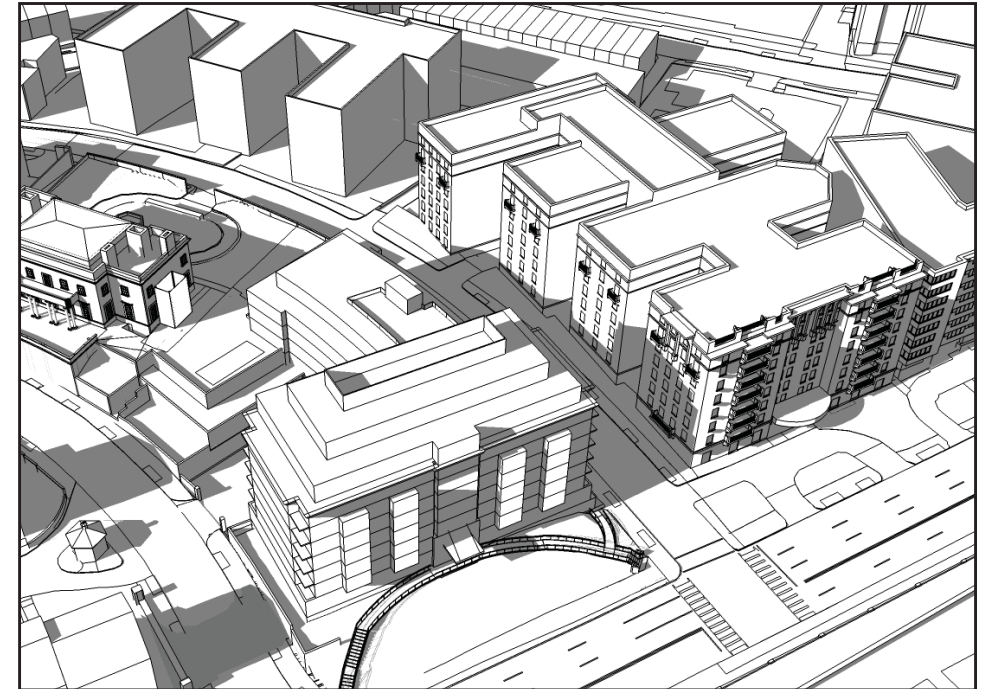
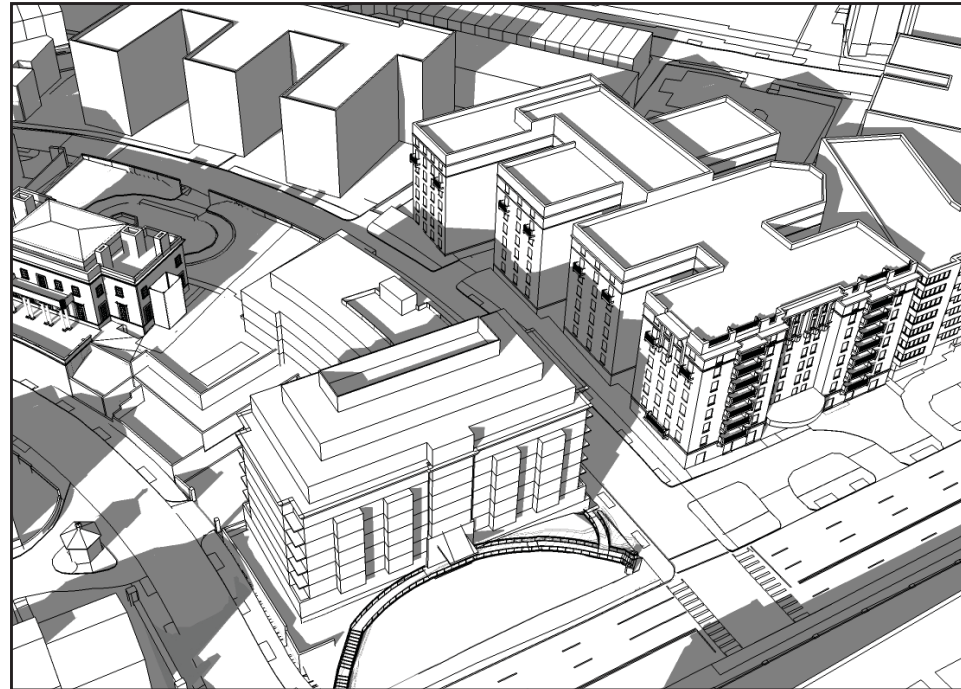
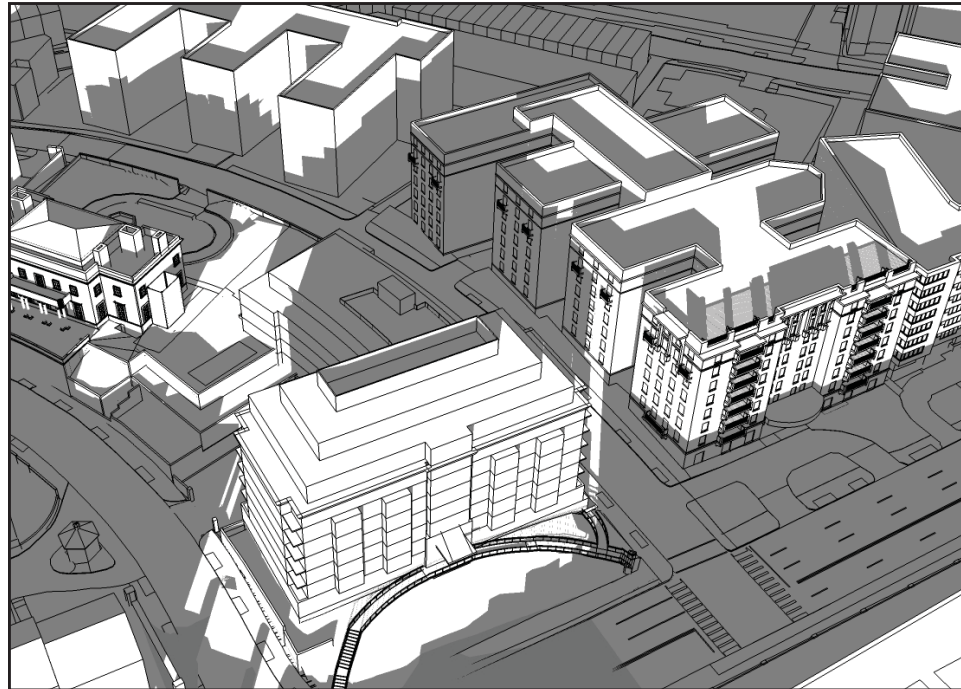


10:00 AM

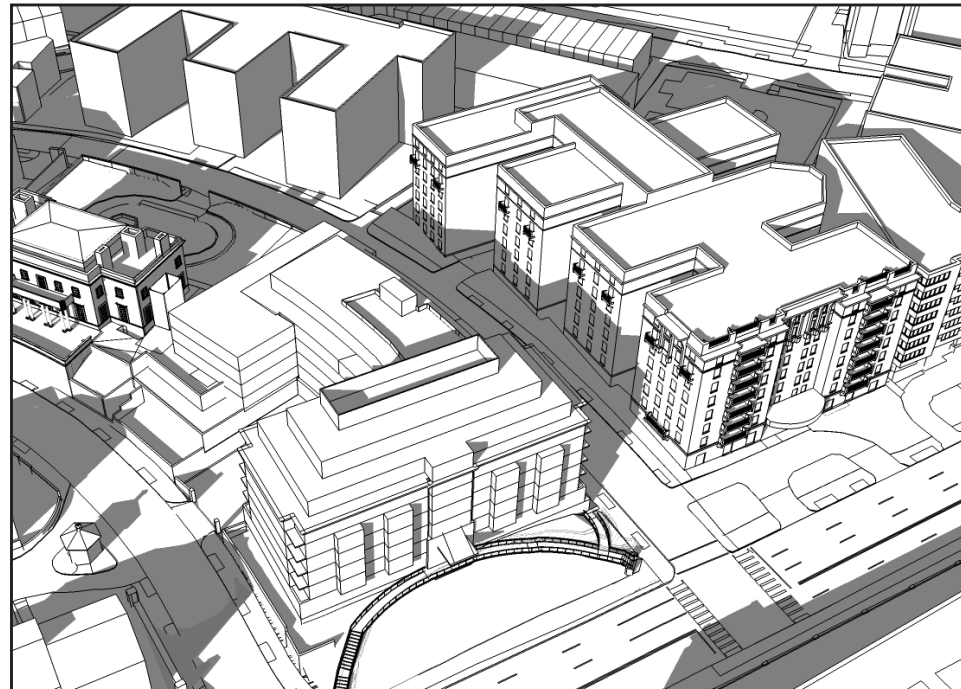
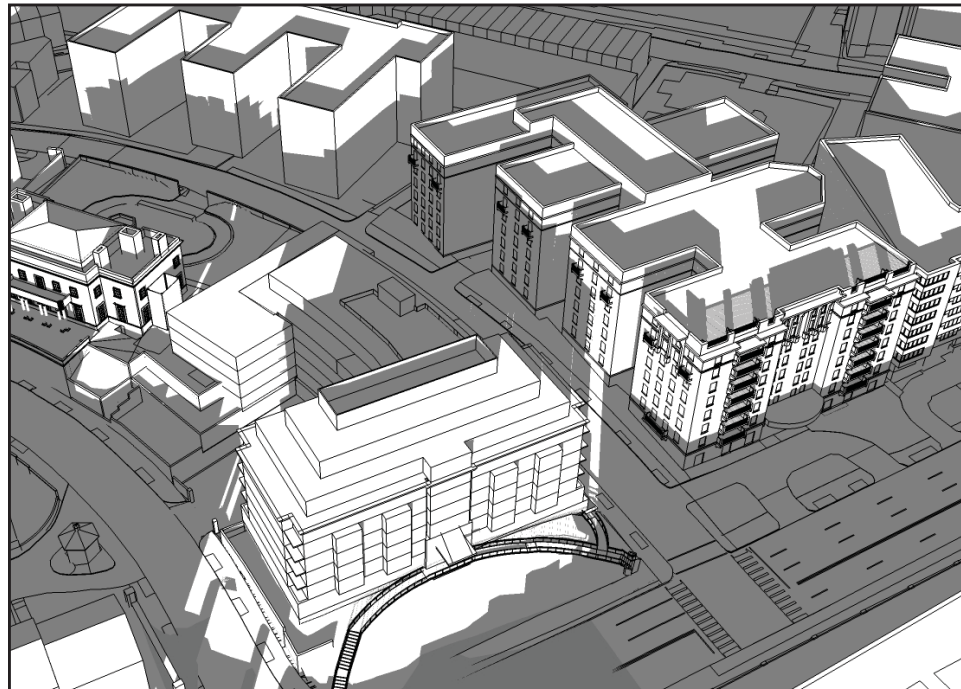


12:00 PM

## MASSING AS APPROVED BY HPRB



## MASSING BY RIGHT



2300 16TH STREET NW  
WASHINGTON, DC

SOLAR ANALYSIS  
APR 25, 2018

Perkins Eastman DC